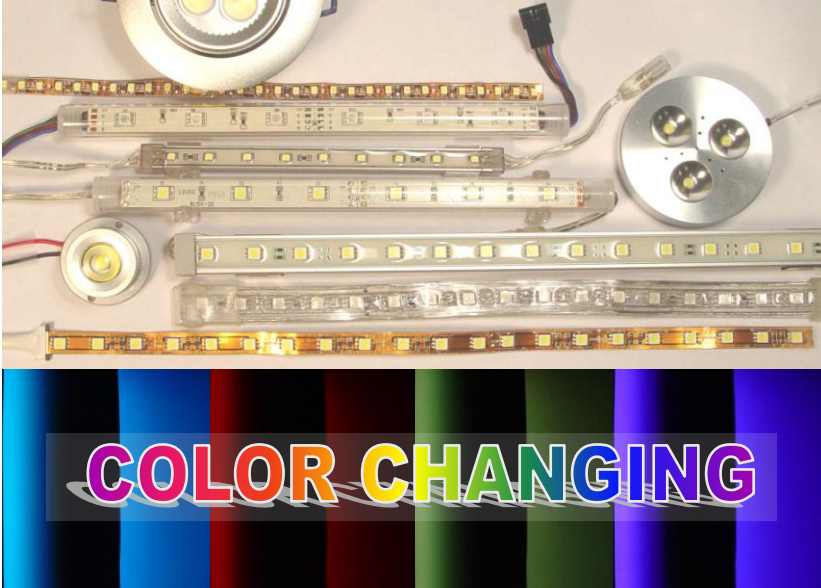




## LED Lighting and Controls



Anyone involved in the design of buildings and homes knows LED lighting is the hottest thing. Implementing LED lighting systems is much different than standard lighting, not only due to the form factor, but also because of the many ways LEDs can be used. There are many variables, from the sizing of power supplies to the quality of the light and consistency of color.

It takes a knowledgeable expert to produce bright white to deep rich colors and to provide controls and dimming. Bri-Tech has been employing LEDs in our theaters and high-end commercial projects for almost 10 years and our staff has developed methods and controls that insure installations are successful. Our engineers have solved the problem of locating all of those low voltage drivers and transformers. Our new LCP-LED can drive 24 LED lighting channels. It has a built-in processor that you can directly connect keypads to, allowing communication with Crestron and Lutron Control systems.

Ask our expert staff about the hundreds of LED variations available for general lighting, coves, accent lighting and signage.

### LED Lighting Systems

#### LCP – LED24

Bri-Tech has engineered LED lighting driver panels which eliminate the remote power supplies. No more searching for places to hide the black box.



- 24 Channels
- Embedded Processor
- Connect simple keypads for direct control
- Crestron and Lutron compatible
- All interior components UL or CE rated
- Controller will support 40 channel slave panel





LED is becoming one of the most popular lighting technologies for use in homes and businesses saving ten times the energy as fluorescent and incandescent bulbs. LED lights also have a life span of more than 50,000 hours unlike your normal light bulb which only has 1,000 to 2,000 hours.

Bri-Tech's new energy-efficient lighting not only saves you money, but can be used in ways you never thought possible. Let Bri-Tech create a design that gives your home or business a whole new ambiance.



### Options:

- Fixed single color: white, blue, green, red and yellow
- Multiple colors: red, green and blue
- Available in both single and double density
- Adapter cables available for connecting to compact power supplies

### Different Lighting Options:

- Large area back lighting
- Under cabinet lighting
- Cove lighting
- Display case lighting

## Residential LED Lighting Systems

### Features:

- Programmable color changing
- Underwater applications
- Accent lighting in customizable Colors
- Installable practically everywhere including: Home Theaters, Bars, Cabinets, Stairs and Bookcases
- Highly flexible bars will allow the LED lights to conform to almost all shapes
- Professional installation by Bri-Tech



829 Lincoln Ave  
Bohemia, NY 11716  
631.563.8000

37 W. Putnam Ave  
Greenwich CT 06830  
203.340.2155

[bri-tech.com](http://bri-tech.com)